



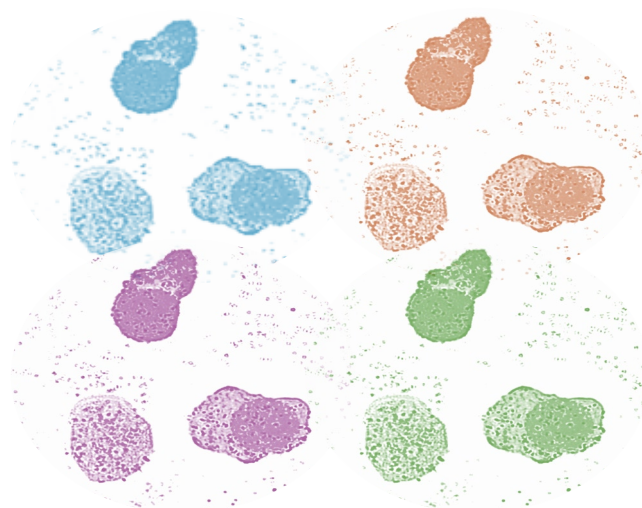
Virtual Meeting  
Multiple Myeloma | 28, November 2024

---

# PERSONAE 2024

---

Multiple Myeloma Virtual Meeting



NOVEMBER 28, 2024

## **CURRENT AND INNOVATIVE STRATEGIES FOR MYELOMA INVESTIGATION AND TREATMENT: TOWARDS PERSONALIZED BLUEPRINTS**

### **Program description and aims**

The **PERSONAE** is a proof-of-concept project funded by the Science Fund of the Republic of Serbia started in 2024. **PERSONAE** develops a platform for ex vivo growth of patient-specific multiple myeloma cells in native-like and xeno-free conditions.

The **PERSONAE Virtual Meeting 2024** aims at **promoting the education and training of young basic researchers and clinicians. This Meeting is conceived to boost awareness on multiple myeloma disease and urgent need for precise medicine.** Specifically, the Meeting aims at providing:

- 1) General knowledge on basic research data and clinical practice in multiple myeloma;
- 2) An overview of the most state-of-the-art contemporary methodologies in myeloma investigation;
- 3) Bioinformatics database on gene-disease relations;
- 4) Networking opportunities with experts, established investigators and young researchers.

**PERSONAE Meeting 2024** program will be based on seminars with topics relevant to multiple myeloma research (clinical, translation and basic topics), alongside with interactive workshop.

**Time:** [Thursday, 28 November 2024](#) (from 12:30 PM, CET Brussels)

**Registration** mandatory (free of charge): <https://forms.gle/uF3qKEFoLAzkgoyg6>

**Meeting link:** <https://matf.webex.com/meet/jovana>

### **Organizing Committee**

Drenka Trivanović, PhD, Institute for Medical Research, University of Belgrade

Aleksandra Jauković, PhD, Institute for Medical Research, University of Belgrade

Jovana Kovačević, PhD, Faculty of Mathematics, University of Belgrade

Tamara Kukolj, PhD, Institute for Medical Research, University of Belgrade

Slavko Mojsilović, MD, PhD, Institute for Medical Research, University of Belgrade

Dušan Vučetić, MD, PhD, Military Medical Academy, Belgrade

Mila Purić, MD, PhD, Institute for Oncology and Radiology of Serbia, Belgrade

Srdja Janković, MD, PhD, University Children's Hospital Tiršova, Belgrade



---

Dr. Drenka Trivanović, Meeting Chair

**BASIC RESEARCH SESSION**

Moderator: Jovana Kovačević

<b>Time (CET, Brussels)</b>	<b>Topic</b>	<b>Speaker</b>	<b>Affiliation</b>	<b>Country</b>
12:30-13:00	Welcome note and Introduction talk (15+15 min)	<b>Organizing Committee Chair: Drenka Trivanović, PhD</b>	<i>Institute for Medical Research, University of Belgrade</i>	<i>Serbia</i>
13:00-13:20	Signals from microenvironment: biomarkers for myeloma bone disease (basic talk) (15+5 min)	<b>Prof. Regina Ebert, PhD</b>	<i>Department of Musculoskeletal Tissue Regeneration, Orthopedic Clinic König-Ludwig-Haus, University of Würzburg</i>	<i>Germany</i>
13:20-13:40	Proteome-based approaches for multiple myeloma research (basic talk) (15+5 min)	<b>Ieronymos Zoidakis, PhD</b>	<i>Biomedical Research Foundation, Academy of Athens, Athens</i>	<i>Greece</i>
13:40-14:00	Bone marrow adipocytes and myeloma (15+5 min)	<b>Zoltán Kellermayer, PhD</b>	<i>University of Pécs Medical School</i>	<i>Hungary</i>
14:00-14:20	Skeletal niche cells in regulating hematopoiesis and bone: cancer cell dormancy in myeloma (basic talk) (15+5 min)	<b>Alanna Green, PhD</b>	<i>Department of Oncology &amp; Metabolism, University of Sheffield, Sheffield</i>	<i>United Kingdom</i>
14:20-14:40	Industrial talk: DXA measurement in myeloma bone disease (10 +5 min)	<b>Tiina Kähkönen, PhD</b>	<i>OncoBone, Ltd</i>	<i>Finland</i>

**BREAK**

**CLINICAL RESEARCH SESSION**

Moderator: Srđa Janković

<b>Time (Central European Time, Brussels) PM</b>	<b>Topic</b>	<b>Speaker</b>	<b>Afiliation</b>	<b>Country</b>
14:50-15:20	Integration of bioinformatics databases on gene-disease relations (20+10 min)	<b>Jovana Kovačević, PhD</b>	<i>Faculty of Mathematics, University of Belgrade</i>	<i>Serbia</i>
15:20-15:40	The role of hematopoietic stem cell transplantation in the time of new immunologic and cellular therapies (clinical talk) (15+5 min)	<b>Jelena Bila, MD, PhD</b>	<i>Clinic of Hematology, University Clinical Center of Serbia, Belgrade</i>	<i>Serbia</i>
15:40-16:00	Transfusion management of multiple myeloma patients (clinical talk)	<b>Dušan Vučetić, MD, PhD</b>	<i>Institute for Transfusiology and Haemobiology, Military Medical Academy, Belgrade</i>	<i>Serbia</i>
16:00-16:20	Chemotherapy for myeloma patients: experience from hematology department (clinical talk) (15+5 min)	<b>Mila Purić, MD</b>	<i>Hematology Divison, Institute for Oncology and Radiology of Serbia, Belgrade</i>	<i>Serbia</i>
16:20-16:40	Immune status of multiple myeloma patiens: experience from hematology clinic (clinical talk) (15+5 min)	<b>Sunčica Kapor, MD, PhD</b>	<i>Department of Hematology, Clinical, and Hospital Center "Dr. Dragiša Mišović-Dedinje"</i>	<i>Serbia</i>
16:40-17:00	Circulating Tumor Cells in multiple myeloma (clinical talk) (15+5 min)	<b>Nada Kraguljac Kurtović, PhD</b>	<i>Clinic of Hematology, University Clinical Center of Serbia, Belgrade</i>	<i>Serbia</i>
17:00-17:20	Flow cytometry screening of MRD in multiple myeloma patients (clinical talk) (15+5 min)	<b>Dragan Jevremovic, MD, PhD</b>	<i>Division of Hematopathology, Mayo Clinic, Rochester, Minnesota</i>	<i>United States</i>
17:20-17:35	Industrial talk: Innovative anti-myeloma drugs (10+5 min)	<b>Jasmina Cvetkovic, PhD</b>	<i>Pfizer Serbia</i>	<i>Serbia</i>
17:35-17:45	Closing Remarks (15 min)	<b>Organizers</b>		<i>Serbia</i>



## PROJECT TEAM



**DRENKA TRIVANOVIĆ,**  
PhD  
Institute for Medical Research  
Project PI



**SLAVKO MOJSILOVIĆ,**  
MD, PhD  
Institute for Medical  
Research



**JOVANA  
KOVAČEVIĆ,** PhD  
Faculty of  
Mathematics and  
Institute for Artificial  
Intelligence



**ALEKSANDRA  
JAUKOVIĆ,** PhD  
Institute for Medical  
Research



**IVANA OKIĆ  
DJORDJEVIĆ,** PhD  
Institute for Medical  
Research



**SANJA  
MOMČILOVIĆ,** PhD  
Institute for Medical  
Research



**ANDJELIJA ČUKIĆ,**  
PhD  
Institute for Medical  
Research



**INSTITUTE FOR MEDICAL RESEARCH**  
University of Belgrade  
National Institute of Republic of Serbia



FACULTY OF  
MATHEMATICS,  
UNIVERSITY OF  
BELGRADE



THE INSTITUTE FOR  
ARTIFICIAL  
INTELLIGENCE  
RESEARCH AND  
DEVELOPMENT  
OF SERBIA

**Clinical and industrial/business supporters:** Military Medical Academy (Serbia), Institute for Orthopedy Banjica (Serbia), Institute for Oncology and Radiology of Serbia, University Children's Hospital Tiršova (Serbia), Mayo Clinics (USA), PR Lobotorija, Haptic Synaptic d.o.o



## PERSONAE Meeting ORGANIZING COMMITTEE



**DRENKA TRIVANOVIĆ, PhD**  
Institute for Medical Research,  
University of Belgrade



**SLAVKO MOJSILOVIĆ, MD, PhD**  
Institute for Medical Research,  
University of Belgrade



**JOVANA KOVAČEVIĆ, PhD**  
Faculty of  
Mathematics and  
Institute for Artificial  
Intelligence



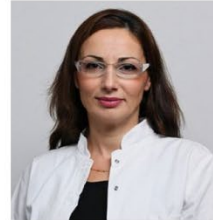
**ALEKSANDRA JAUKOVIĆ, PhD**  
Institute for Medical Research,  
University of Belgrade



**TAMARA KUKOLJ, PhD**  
Institute for Medical Research,  
University of Belgrade



**DUŠAN VUČETIĆ, MD, PhD**  
Military Medical  
Academy, Belgrade



**Prim. MILA PURIĆ, MD**  
Institute for Oncology  
and Radiology of  
Serbia, Belgrade



**SRĐA JANKOVIĆ, MD, PhD**  
University Children's Hospital  
Tiršova, Belgrade

